

VANSTONE PRECAST (PTY) LTD

PRECAST CONCRETE PANEL MANHOLE / DRAW BOX FOR TELECOMS INSTALLATIONS

780 x 780 x 815 mm

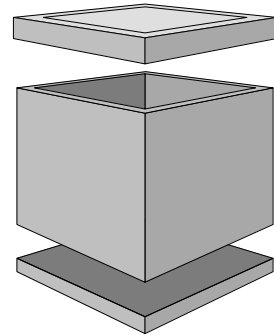
SPECIFICATION

Update : M ay 2020 (cast iron, reinforced concrete lids)

Introduction

The Panel Manhole is a 780 x 780 x 815mm high (externally) reinforced precast concrete manhole or draw box suitable for underground telecoms services.

It comes equipped with any number of knock out holes of size and arrangement to suit the customer.



There are three lid options, a standard type 9A light duty 600 x 600 cast iron lid and frame, a reinforced concrete lid and frame and a galvanized steel “vastrap” lid.

The Panel Manhole has four loose panel walls that can be ‘flat packed’ for efficient transport and are assembled on site.

Design

The Panel Manhole has been designed in accordance with SABS 0100-1 2000 “The structural use of concrete” to safely withstand an occasional vehicle wheel loads of 50 kN (5 t) evenly distributed over an area of 200 x 150 mm static or travelling dead slow. This does not apply to cast iron lids.

The following design criteria were used:

Limit state of design:	Ultimate
Imposed load:	50 kN static wheel load acting vertically on lid over 200 x 150 mm area.
Load factor:	1.6
Material safety factors:	Steel 1.15; Concrete 1.5
Analysis:	Static, simply supported
Concrete strength	30 Mpa
Reinforcing:	High tensile main reinforcing to SABS 920 in lid

Dimensions

External:	Height	765 mm	Internal:	Depth	700 mm
	Length	780 mm		Length	650 mm
	Width	780 mm		Width	650 mm
Wall thickness	65 mm minimum				
Lid thickness	100 mm				

Components list

Floor:	800 x 800 x 85 mm
Walls:	4 off 780 x 780 x 65mm
Lid:	Concrete or cast iron in 820 x 820 x 100mm concrete surround
Knock-outs:	As required
Lifting boxes in lid:	2 x with slots for special key, also acting as ventilation openings for chamber.
Other:	Any other equipment to customers' requirements like unistruts, security bolts etc. may be supplied as optional extras.

Installation

Excavate for the handhole to a depth of at least 800 mm deep below the final level. Over excavate sufficiently to allow working space for assembly and compaction of backfill.

In the bottom of the excavation, prepare a true and level bed of 30mm thick riversand, crusher sand, fine clean gravel (particle size < 6 mm) or cement stabilized topping material. Place the floor carefully on the bed ensuring proper and even seating before proceeding. Place the walls on the floor and the frame on the walls. Use a layer of ordinary cement mortar between floor and walls and walls and frame to ensure snug seating. Clean excess mortar off directly after placing of components.

Knock out the required service holes by using no more than a 4 pound hammer. After installation of services it may be plugged with a semi-dry 1:3 cement/riversand mixture or poly-urethane foam. Full water tightness is not achievable.

Knocking out of holes:

Use a light ball head or ball-pein hammer of no more than 1½ lbs. Identify the hole to be knocked out by looking on the inside. Put one hand over the hole. Now locate the hole's corresponding outside position by placing the other hand on the outside of the wall directly over it. Mark if necessary.



Start tapping from the outside with the ball of the hammer as close as possible to the centre of the hole. The taps should be light and repeatedly on the same spot until penetration occurs. Carefully enlarge the hole from the centre out until it is complete. DO NOT use force, a heavy hammer or knock the hole out from the inside.

Attachments

- Drawing showing panel type manhole and an arrangement of knock-outs. Any arrangement is possible.

Contact

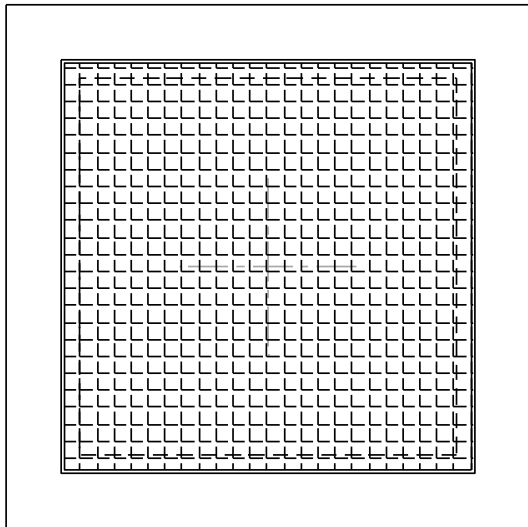
Vanstone Precast (Pty) Ltd

Hardy Muller Street, Rosslyn, Metro of Tshwane

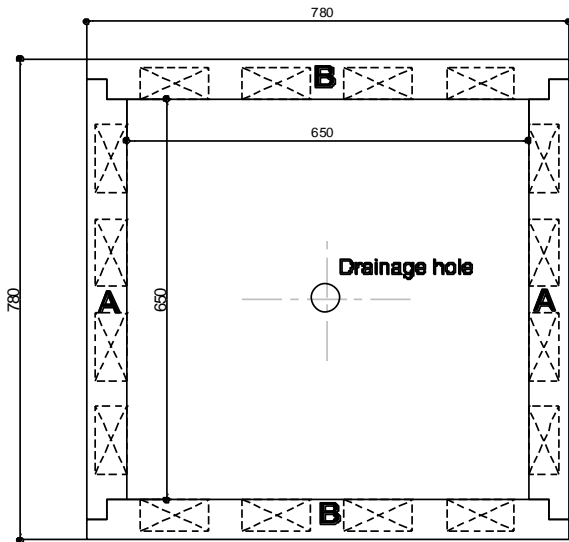
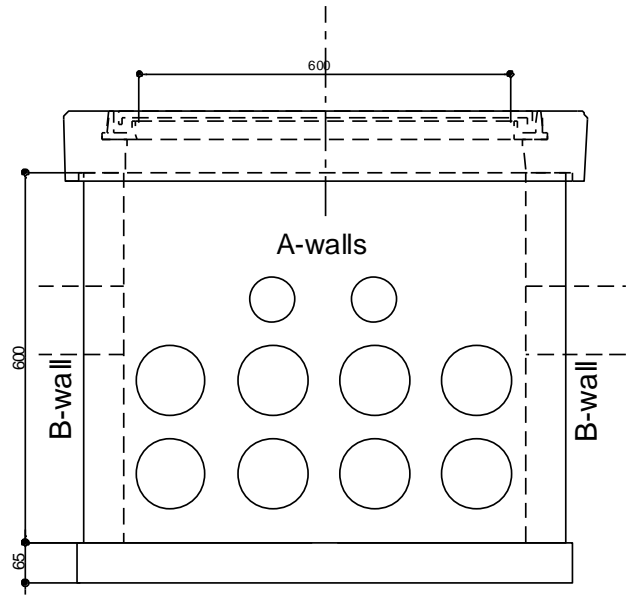
Tel 012 541 2056, Fax 012 541 0181

www.vanstone.co.za

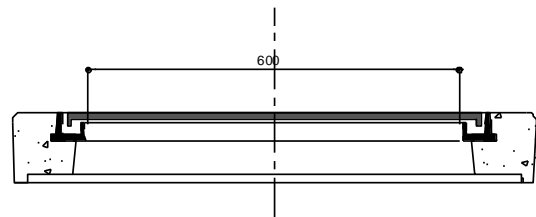
E-mail pvheerden@vanstone.co.za



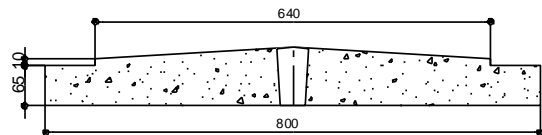
PLAN - TOP FRAME



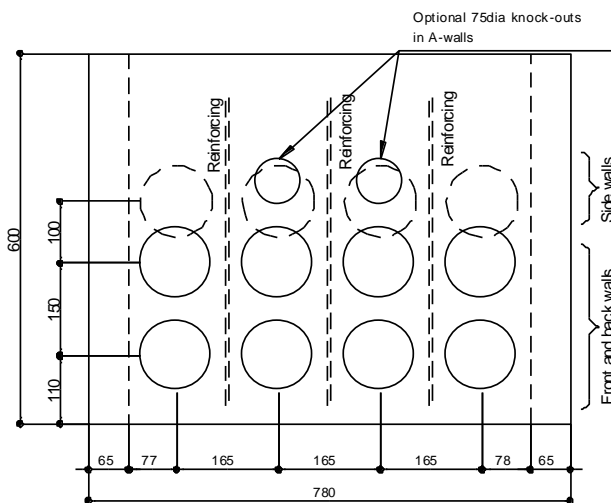
PLAN - WALLS



SECTION - TOP FRAME

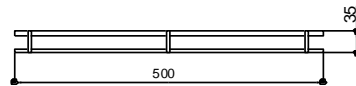


SECTION - BASE
With drainage hole



ELEVATION OF WALLS

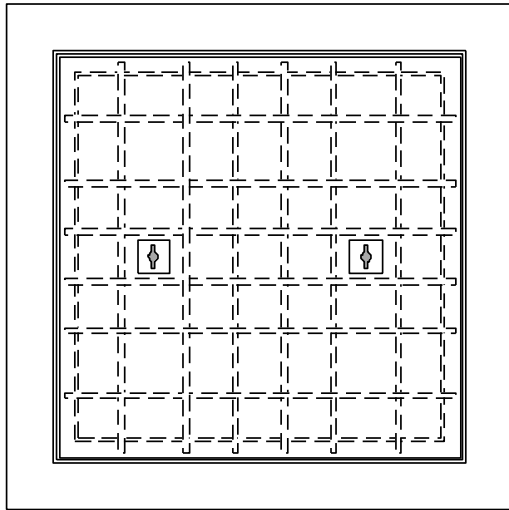
Optional 75dia knock-outs
in A-walls



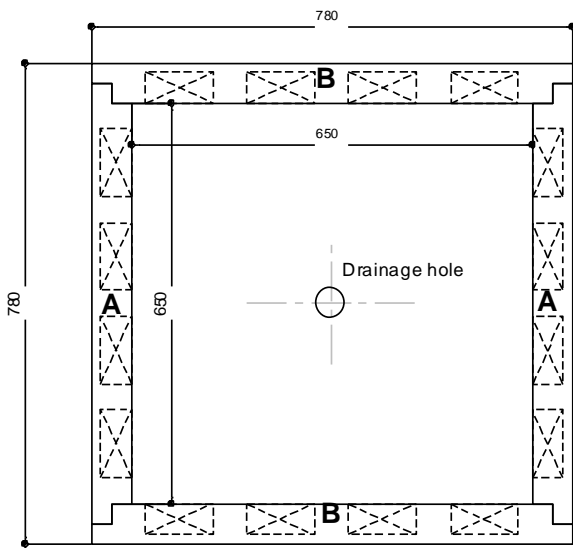
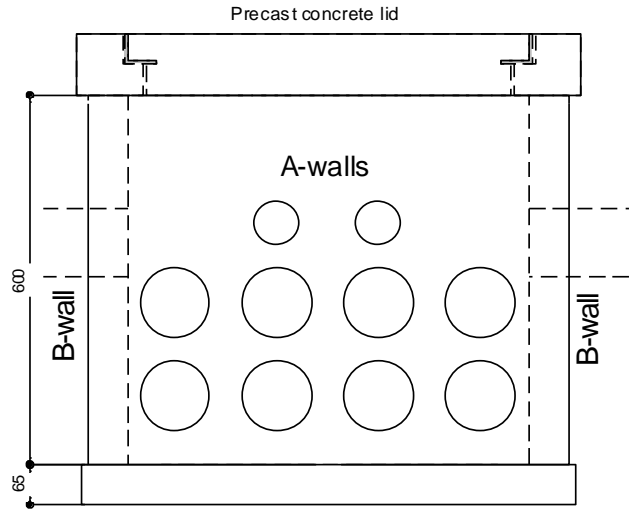
R6 Reinforcing

**600 x 600
PANEL MANHOLE
CAST IRON LID**

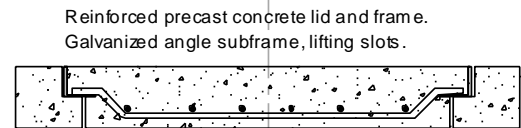




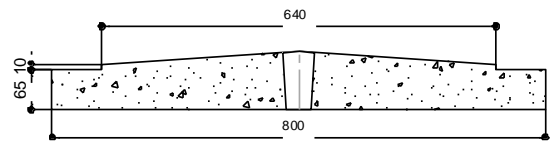
PLAN - TOP FRAME



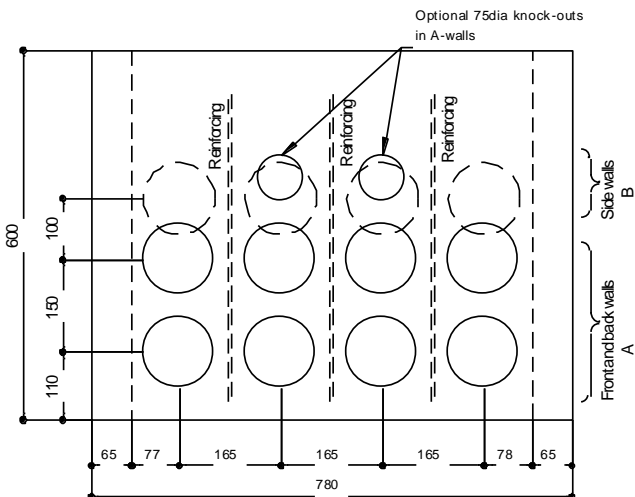
PLAN - WALLS



SECTION - TOP FRAME



SECTION - BASE
With drainage hole



ELEVATION OF WALLS



R6 Reinforcing

600 x 600
PANEL MANHOLE
CONCRETE LID

