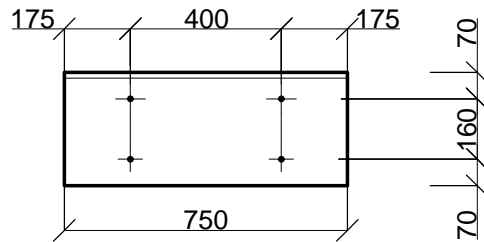
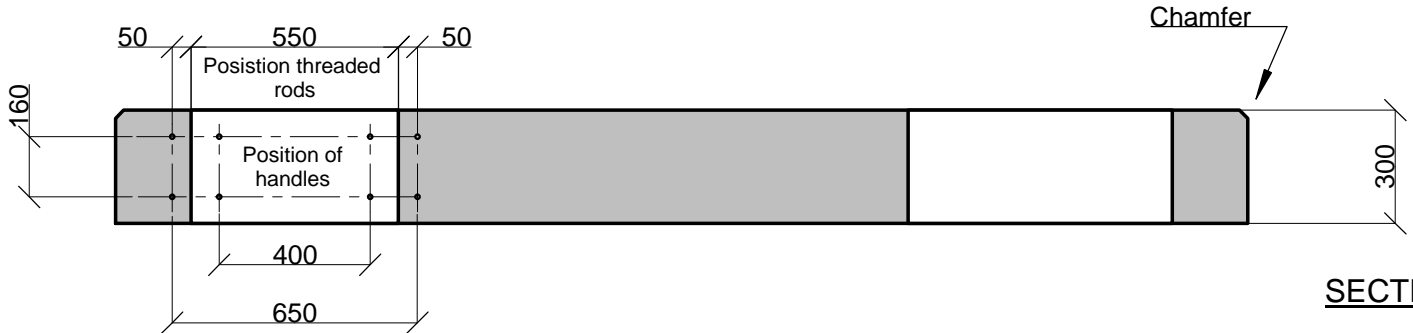
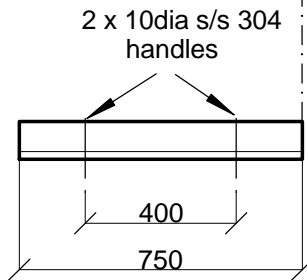


TOP VIEW



CABLE ENTRY COVER



SECTION

**SPECIFICATION:**

1. Concrete fcu = 30MPa
2. Reinforcing steel to SANS 920  
Detailing to bending schedule.
3. All steel except reinforcing is stainless steel.

**PLINTH FOR MINI SUB-STATION  
TYPE A  
3000 x 900 x 300**

References:  
Eskom Drawing No. D-DT-0859 Sheet 2  
SAP No. 0185543  
NRS 095:2012 Figure A.1

Vanstone Precast (Pty) Ltd  
www.vanstone.co.za  
Tel 012 541 2056

