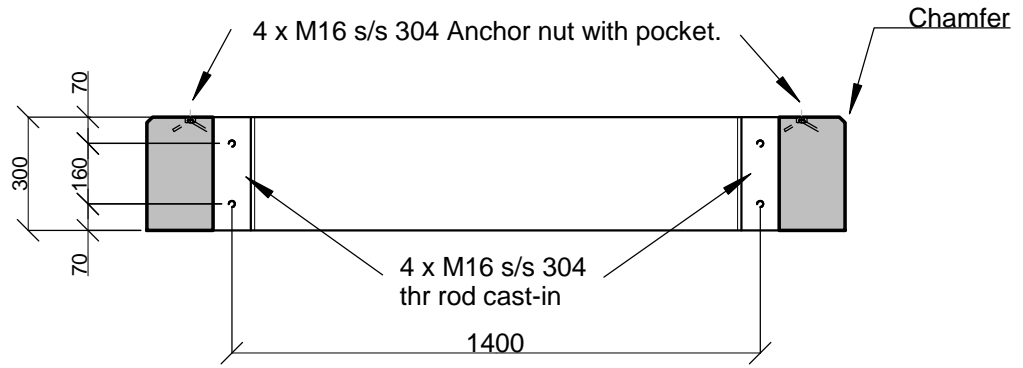


TOP VIEW

FRONT VIEW OF REMOVABLE COVER

SPECIFICATION:

1. Concrete fcu = 30MPa
2. Reinforcing steel to SANS 920 Detailing to bending schedule.
3. All steel except reinforcing is stainless steel.



SECTION

References:
 Eskom Drawing No. D-DT-0863 Sheet 6
 SAP No. 0185547
 NRS 095:2012 Figure A.6
 Vanstone: P8-NRS-A.6

PLINTH FOR 4-WAY RMU
1850 x 1200 x 300

Vanstone Precast (Pty) Ltd
 www.vanstone.co.za
 Tel 012 541 2056

